



# **COPA BRASIL DE VELA** *2014*

**13 - 20 December 2014**

***470 M/F, 49er e 49erFX Brazilian National  
Championship***

**ORGANIZATION:**  
***Confederação Brasileira de Vela***  
***Prefeitura Municipal de Niterói***

## SAILING INSTRUCTIONS

*[DP] denotes a rule for which the penalty is at the discretion of the International Jury.*

*[NP] denotes that a breach of this rule will not be grounds for a protest by a boat.*

### 1. RULES:

- 1.1 The regatta will be governed by the rules as defined in The Racing Rules of Sailing.
- 1.2 Class rules will apply except those related with conditions to organize and conduct Class Championships.
- 1.3 For the "Medal Race" Addendum Q will apply, as described at the end of this Sailing Instructions. For that race, sailing instructions of Addendum Q will prevail over any other items of this Sailing Instructions that conflict.
- 1.4 If there is a conflict between languages the Portuguese text will take precedence.

### 2. NOTICE TO COMPETITORS:

- 2.1 Notice to competitors will be posted on the official notice board located near to the boat park.
- 2.2 When a visual signal is displayed over an area, event or fleet flag, the signal applies only to that area, event or fleet. This changes the Race Signals preamble

### 3. CHANGING TO SAILING INSTRUCTIONS:

- 3.1 Any change to the Sailing Instructions will be posted by 1000 on the day it will take effect except change to the format or schedule that will be posted by 2000 on the day before it will take effect.

### 4. SIGNALS MADE ASHORE:

- 4.1 Signals made ashore will be displayed at the official flag pole, located close to the boat park.
- 4.2 When flag AP is displayed ashore, '1 minute' is replaced by 'not less than 30 minutes' for Race Area São Francisco, not less than 60 minutes for Race Areas Navy Academy and Bridge, not less than 75 minutes for Race Areas Niteroi and Copacabana in the race signal AP.

### 5. COMPETITION FORMAT:

- 5.1 RS:X Woman and RS:X Youth (8.5) classes, in all races and also for Medal Race criteria, will have the same starting sequence, course and scoring.
- 5.2 For all classes, the event will consist of one opening series followed by a "Medal Race", according item 5.3.
- 5.3 Medal Race:
  - 5.3.1. A Medal Race will be scheduled if 4 or more opening series races are completed. If less than 4 races have been completed before Medal Race day, the opening series will continue on that day until complete 4 races.
  - 5.3.2. Competitors' highest ranked in the opening series, will go to the Medal Race as follow:
    - a) Classes with 10 or more entries, the 10 highest ranked.
    - b) Classes with 9 or less entries, the 5 highest ranked.
  - 5.3.3. Assignments to the Medal Race will be based on the ranking available at 0800 on the day of the Medal Race. Protest Committee may extend this time limit.

### 6. SCHEDULE OF RACES:

- 6.1 Dates of racing:

Day of Week	Date	Time	Activity
Tuesday	16/12/2014	13:00	Racing
Wednesday	17/12/2014	13:00	Racing
Thursday	18/12/2014	13:00	Racing
Friday	19/12/2014	13:00	Racing
Saturday	20/12/2014	13:00	Medal Races
		18:00	Time limit for signaling starting Medal Races
		19:00	Awards Ceremony
Sunday	21/12/2014	Official Departure Day	

- 6.2 The daily schedule with number of races to each class, Area assignments and the scheduled time of the warning signal for the first race of the day will be published by Race Committee as per item 3.1.
- 6.3 Races not sailed on the scheduled day may be sailed on a following day at the discretion of the race committee.
- 6.4 The warning signal for each succeeding race will be made as soon as practicable.
- 6.5 To alert boats that a race or sequence of races will begin soon, the orange starting line flag will be displayed with one sound on Race Committee vessel at least five minutes before the warning signal of the first Class to start.

## 7. CLASS FLAGS:

### 7.1 CLASS:

Finn

49er

49er FX

470 M

470 W

Laser Std.

Laser Rdl.

RS:X M

RS:X W & RS:X Youth (8.5)

### FLAGS:

White figure with Finn class insignia.

White figure with 49er class insignia.

Light blue figure with 49er FX class insignia.

White figure with 470 class insignia.

Light Blue figure with 470 class insignia.

White figure with Laser class insignia.

Light blue figure with Laser class insignia.

White figure with RS:X class insignia.

Light blue with RS:X class insignia.

## 8. RACING AREAS:

- 8.1 Attachment 1 shows the location of race areas, not in scale and with approximated dimensions.
- 8.2 The Race Committee may reassign one class to any racing area no later than two hours before the scheduled warning signal for the first race of the day. However:
- When flag AP is displayed ashore, the racing area may be changed until 30 minutes before the AP is removed; and
  - When flag AP is displayed afloat, the racing area may be changed. One race committee vessel will display flag LIMA over affected class flag and will go to the new racing area.
- 8.3 Medal Races for all classes will be sailed on São Francisco area.

## 9. COURSES:

- 9.1 The diagrams in Attachment 2 show the courses, including identification codes, the order in which marks are to be passed and the side on which each mark is to be left, the approximate angles and distances at the discretion of the Race Committee.

## 10. MARKS:

- 10.1 Course, start and finish marks will be specified in daily schedule notices as per item 6.2.

## 11. THE START:

- 11.1 The starting line will be between a staff displaying an orange flag on the Race Committee vessel at the starboard end and:
- The course side of the starting mark at the port end, or
  - A staff displaying an orange flag on the race committee vessel at the port end.
- 11.2 [NP] [DP] Boats whose warning signal has not been made shall avoid the starting area during the starting sequence for other races.
- 11.3 A boat starting later than 4 (four) minutes after her starting signal will be scored as not started – DNS. This changes rule A4.
- 11.4 If flag U has been displayed as the preparatory signal, no part of a boat's hull, crew or equipment shall be in the triangle formed by the ends of the starting line and the first mark during the last minute before her starting signal. If a boat breaks this rule and is identified, she shall be disqualified without a hearing but not if the race is restarted or re-sailed or postponed or abandoned before the starting signal. This changes RRS 26 and A5. When flag U is used as the preparatory signal, RRS 29.1 does not apply. The scoring abbreviation for a flag U penalty is UFD. This changes RRS A11.

## 12. CHANGE OF THE NEXT LEG OF THE COURSE:

- 12.1 To change next leg of the course, the race committee may lay a new mark (or move the finish line) and remove the original mark as soon as practical. When in a subsequent change a new mark is replaced, the original mark may be used.
- 12.2 Except at a gate, boats shall pass between the race committee boat signaling the change of the course and the nearby mark, leaving the mark to port and the race committee vessel to starboard. This changes rule 28.

## 13. FINISH:

- 13.1 The finishing line will be between a staff displaying an orange flag on the race committee vessel and either:
- the course side of the nearby finishing mark, or
  - a staff displaying an orange flag on the race committee vessel at the other end.

## 14. PENALTY SYSTEM:

- 14.1 [NP] [DP] A boat that accept a penalty by rule 44.1 shall fill an acknowledge form at the Regatta Office during protest time limit of that day.
- 14.2 Appendix P will apply.
- 14.3 For the Nacra, 49er and 49er FX, rules 44.1 and P2.1 are changed so that the Two-Turns Penalty is replaced by the One-Turn Penalty.
- 14.4 If in the medal race a boat is penalized for breaking rule 42 a second or third time during the regatta she may acknowledge her breach by immediately retiring from the race. If she fails to do so she will be disqualified without a hearing and ranked tenth in the regatta. If there are two such boats, they will be ranked ninth and tenth, in order of their opening-series ranks, etc. This changes rules P2.2 and P2.3

## 15. TIME LIMITS AND TARGET TIMES:

- 15.1 Time limits and target times for the opening series races are as follows:

Class	Target Time	Mark 1 Time Limit	Time Limit	Finish Window
Finn, Laser Std., Laser Radial, 470 M/F	50 min.	25 min.	90 min.	15 min.
Nacra, 49er and 49er FX	30 min.	20 min.	50 min.	10 min.
RS:X (M/F), RS:X 8.5 M	20 - 25 min.	20 min.	50 min.	10 min.

- 15.2 For the Medal Race, time limits and target times are as follows:

Class	Target Time	Mark 1 Time Limit	Time Limit	Finish Window
49er, 49er FX, RS:X (all), Nacra	20 min.	No limit	40 min.	5 min.
All other classes	25 min.	10 min.	40 min.	10 min.

- 15.3 If no boat has passed mark 1 within mark 1 time limit the race will be abandoned. Failure to meet the target time will not be grounds for redress. This changes rule 62.1(a).
- 15.4 Will be scored DNF without a hearing boats that not finish within finish window time after the first boat sails the course and finishes. This changes rules 35, A4 and A5.

## 16. PROTESTS AND REQUESTS FOR REDRESS:

- 16.1 [NP] [DP] Protest forms are available at the Regatta office. Protests and requests for redress or reopening shall be delivered there within the appropriate time limit.
- 16.2 Boat protests about eligibility and Class Rules shall be delivered at the end of Protest Time Limit on 16/12/2014.
- 16.3 For each class the protest time limit after the last boat of that class has finished the last race of the day, or the race committee signal abandonment or no more racing that day, whichever is later, will be as follow (This modify rule 61.3 and 62.2.):

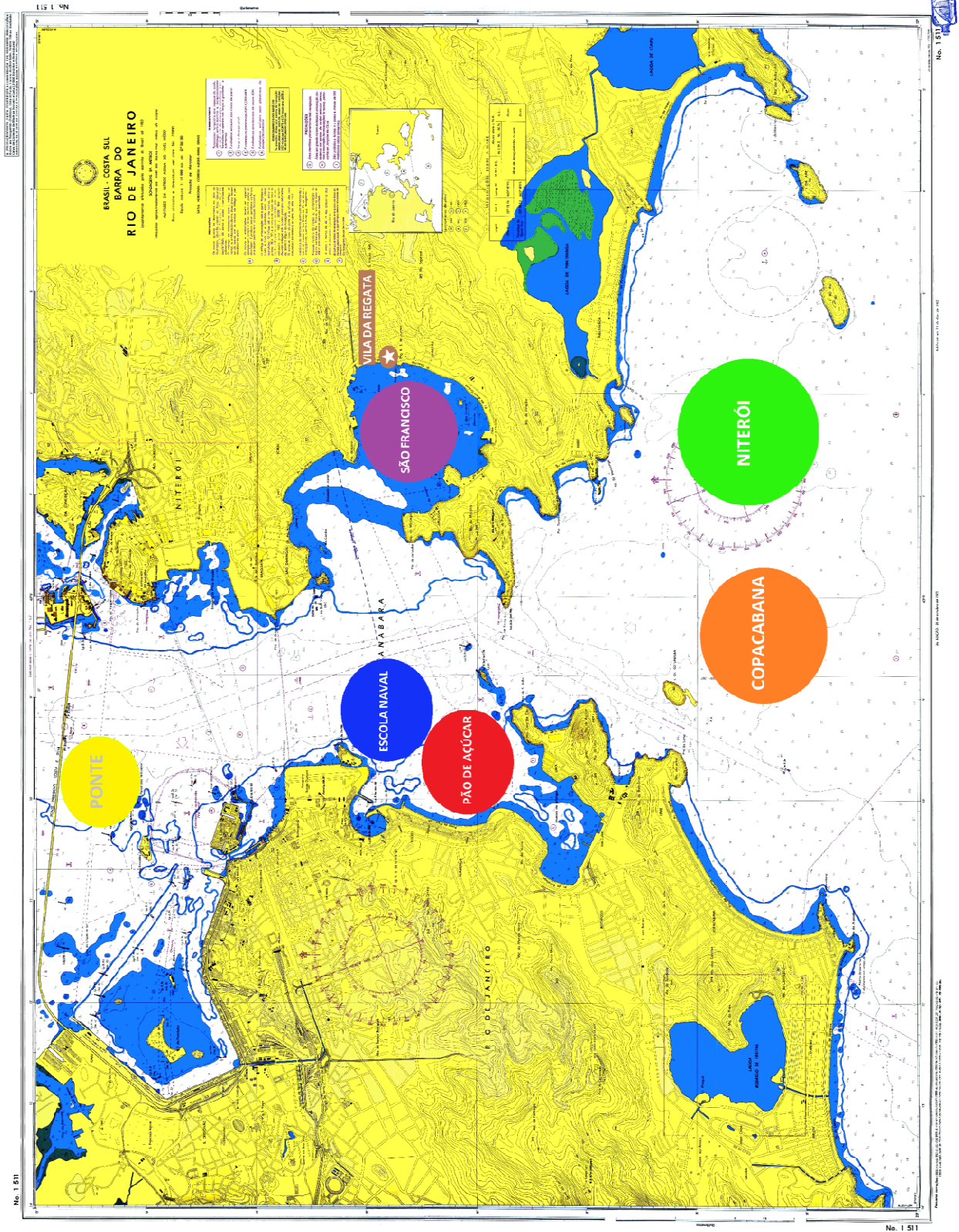


Race Area	Time Limit (min.)
Bridge	110
Navy Academy	90
Sugar Loaf	100
São Francisco	60
Niterói	110
Copacabana	120

- 16.4 The same limit of item 16.3 applies to all Race Committee and Protest Committee protests about incidents they observed on the Race Areas and requests for redress (modifies rules 61.3 and 62.2).
- 16.5 If rule N1.4(b) applies, time limit to request a hearing under this rule is 30 minutes after the part have been informed of panel decision.
- 16.6 Notices to Competitors will be posted no later than 30 minutes after the protest time limit to inform competitors of hearings in which they are parties or named as witnesses. Hearings will be held in the protest room, located close to the boat park, at the time scheduled on that notice.
- 16.7 Notices of protests by the race committee or protest committee will be posted to inform boats under rule 61.1(b).
- 16.8 A list of boats that have been penalized under Appendix P for breaking rule 42 will be posted, according item 14.2.
- 16.9 Penalties for breaches of Notice of Race 2 and 14 or items of these Sailing Instructions marked as [NP] will not be grounds for a protest or request for redress by a boat. This changes rule 60.1(a).
- 16.10 Penalties for breaches of Notice of Race 2 and 14, Class Rules or items of these Sailing Instructions marked as [DP] are at the discretion of the protest committee. A boat may accept a discretionary penalty before a hearing concerning the same incident by completing a form available at the jury office.
- 16.11 On the last scheduled day of racing a request for reopening a hearing shall be delivered:
- within the protest time limit if the requesting party was informed of the decision on the previous day;
  - no later than 30 minutes after the requesting party was informed of the decision on that day.
- This changes rule 66.
- 16.12. On the last scheduled day of racing a request for redress from a protest committee decision shall be delivered no later than 30 minutes after the decision was posted. This changes rule 62.2.
- 17. SCORING:**
- 17.1 Rule B8 is deleted.
- 17.2 Four races of the opening series are required to be completed to constitute a series that will have one discard when 6 (six) or more races have been completed. However, the score from any Medal Race will not be excluded.
- 17.3 For the Medal Race, rule A4.1 is changed so that the points are doubled. Rule A4.2 is changed so that the scores are based on the number of boats assigned to compete in that race and then doubled.
- 17.4 For competitors assigned to compete in the Medal Race, ties will be broken by the Medal Race score. This changes rule A8. For tied boats with the same score in the Medal Race, ties will be broken applying rule A8 to the opening series scores.
- 17.5 The boats assigned to compete in the medal race will be ranked highest in the series, except boats disqualified from the medal race under rule 5 or rule 69.
- 17.6 A boat assigned to compete in the medal race shall make a genuine effort to start, sail the course and finish. A breach of this paragraph shall not be grounds for a protest by a boat. This changes rule 60.1(a). The penalty for a breach of this paragraph will be ranking the boat 10th in the final series score. If there are two such boats, they will be ranked 9th and 10th, in order of their opening-series ranks, and so on. This changes rule A2.
- 17.7 In case of non-Brazilian entries in the event, the scores will be unique, including all participants. The position of best Brazilian boats will be defined from those scores, including results of all competitors.
- 18. [NP] [DP] SAFETY REGULATIONS:**
- 18.1 A boat that retires from a race shall notify the race committee as soon as possible.

- 18.2 Competitors shall carry onboard personal flotation devices for all crew during all the time onboard, recommended wear it during all competition time or observing specific rules of each class.
- 19. [NP] [DP] REPLACEMENT OF CREW OR EQUIPMENT:**
- 19.1 Substitution of competitors will not be allowed without prior written approval of the race committee.
- 19.2 Substitution of damaged or lost equipment will not be allowed unless authorized by the race committee. Requests for substitution shall be made to the committee at the first reasonable opportunity.
- 20. [NP] [DP] EQUIPMENT AND MEASUREMENT CHECKS:**
- 20.1 Not later than 1800 on 15/12/2014 the competitors, boats and equipment shall pass through Equipment and Measurement checks in the Venue.
- 20.2 A boat or equipment may be inspected at any time for compliance with the class rules and sailing instructions. On the water, a boat can be instructed by a race committee equipment inspector or measurer to proceed immediately to a designated area for inspection.
- 21. OFFICIAL BOATS:**
- 21.1 Official boats will be marked as follows:
- |                      |   |  |
|----------------------|---|--|
| Race Committee boats | - | White Flag with "RC" in black and colored stripes. |
| PRO                  | - | White Flag with "IRO" in blue                      |
| Protest Committee    | - | White flag with "JURY" in black.                   |
| Press                | - | Green flag with "MEDIA" in white.                  |
- 21.2 Actions by official boats shall not be grounds for requesting redress by a boat. This changes RRS 60.1(b).
- 22. [NP] [DP] SUPPORT BOATS:**
- 22.1 Support boats shall be registered at the regatta Office no later than 1800 on 15 December 2014.
- 22.2 Team leaders, coaches and other support personnel shall stay outside areas where boats are racing from the time of the preparatory signal for the first class to start until all boats have finished or retired or the race committee signals a postponement, general recall or abandonment.
- 23. [NP] [DP] TRASH DISPOSAL:**
- 23.1 Trash may be placed aboard support or official boats.
- 24. [NP] [DP] BERTHING:**
- 24.1 When ashore boats shall be kept at the designated places in the Venue from 1600 on 16 December 2014 until the end of the event.
- 25. [NP] [DP] PRIZES:**
- 25.1 Prizes will be awarded for the 1º, 2º and 3º places each class.
- 25.2 Prize Giving Ceremony will be in the Venue as soon as possible after competitors come back ashore after last Medal Race
- 25.3 To honor sponsors and press that will be on 20 December 2014, kindly ask to winner athletes on each class to attend II Copa Brasil de Vela – Niterói 2014 Prize Giving Ceremony.
- 26. DISCLAIMER OF LIABILITY:**
- 26.1 Competitors participate in the regatta entirely at their own risk. See rule 4, Decision to Race. The organizing authority will not accept any liability for material damage or personal injury or death sustained in conjunction with or prior to, during, or after the regatta.
- 27. [NP] [DP] ADVERTISING:**
- 27.1 Boats and athletes shall expose advertising as given by Organizing Authority following ISAF Regulation 20.4.

# ATTACHMENT 1 RACE AREAS

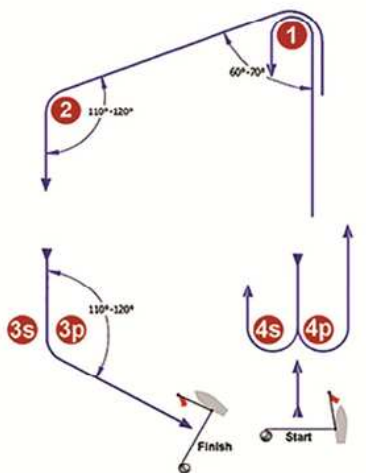




# ATTACHMENT 2

## COURSES

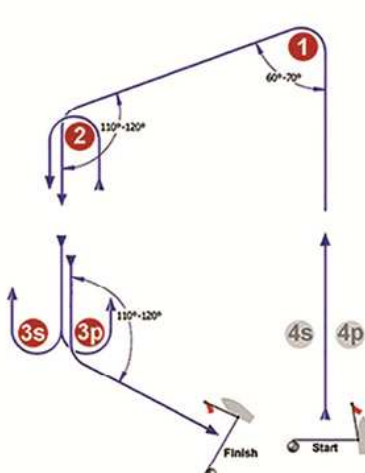
### I



**Course: Inner Trapezoid**

Signal	Mark Rounding Order
I2	Start - 1 - 4s/4p - 1 - 2 - 3p - Finish
I3	Start - 1 - 4s/4p - 1 - 4s/4p - 1 - 2 - 3p - Finish
I4	Start - 1 - 4s/4p - 1 - 4s/4p - 1 - 4s/4p - 1 - 2 - 3p - Finish

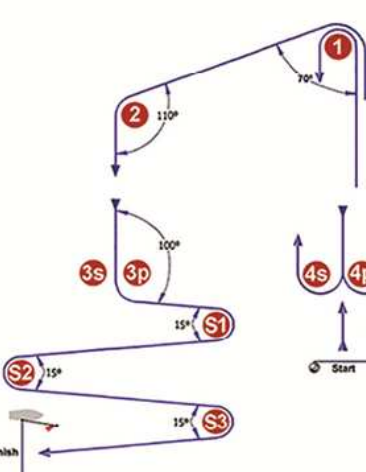
### O



**Course: Outer Trapezoid**

Signal	Mark Rounding Order
O2	Start - 1 - 2 - 3s/3p - 2 - 3p - Finish
O3	Start - 1 - 2 - 3s/3p - 2 - 3s/3p - 2 - 3p - Finish
O4	Start - 1 - 2 - 3s/3p - 2 - 3s/3p - 2 - 3s/3p - 2 - 3p - Finish

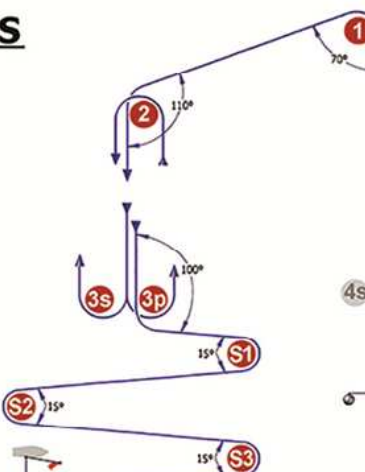
### IS



**Course: Inner Slalom**

Signal	Mark Rounding Order
IS2	Start - 1 - 4s/4p - 1 - 2 - 3p - S1 - S2 - S3 - Finish
IS3	Start - 1 - 4s/4p - 1 - 4s/4p - 1 - 2 - 3p - S1 - S2 - S3 - Finish
IS4	Start - 1 - 4s/4p - 1 - 4s/4p - 1 - 4s/4p - 1 - 2 - 3p - S1 - S2 - S3 - Finish

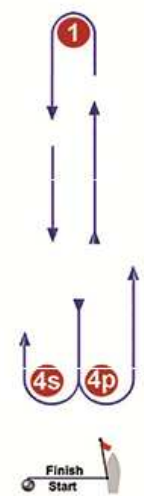
### OS



**Course: Outer Slalom**

Signal	Mark Rounding Order
OS2	Start - 1 - 2 - 3s/3p - 2 - 3p - S1 - S2 - S3 - Finish
OS3	Start - 1 - 2 - 3s/3p - 2 - 3s/3p - 2 - 3p - S1 - S2 - S3 - Finish
OS4	Start - 1 - 2 - 3s/3p - 2 - 3s/3p - 2 - 3s/3p - 2 - 3p - S1 - S2 - S3 - Finish

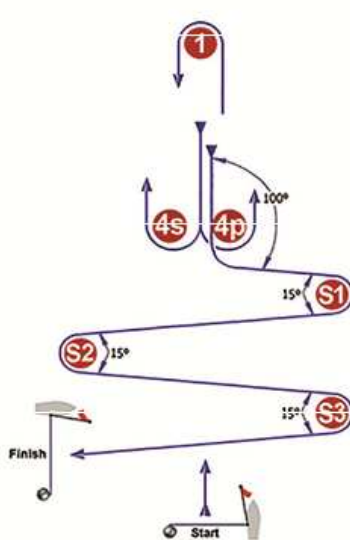
### L



Course: Windward / Leeward

Signal	Mark Rounding Order
L2	Start - 1 - 4s/4p - 1 - Finish
L3	Start - 1 - 4s/4p - 1 - 4s/4p - 1 - Finish
L4	Start - 1 - 4s/4p - 1 - 4s/4p - 1 - 4s/4p - 1 - Finish

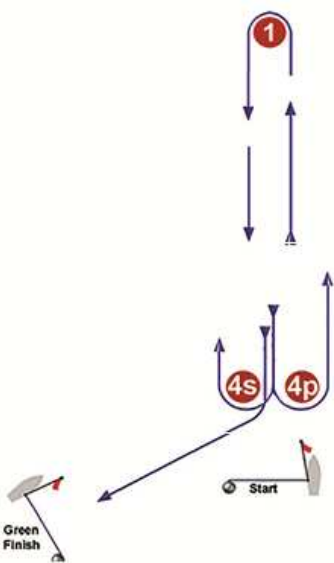
### LS



Course: Windward/Leeward With Slalom Finish

Signal	Mark Rounding Order
LS2	Start - 1 - 4s/4p - 1 - 4p - S1 - S2 - S3 - Finish
LS3	Start - 1 - 4s/4p - 1 - 4s/4p - 1 - 4p - S1 - S2 - S3 - Finish
LS4	Start - 1 - 4s/4p - 1 - 4s/4p - 1 - 4s/4p - 1 - 4p - S1 - S2 - S3 - Finish

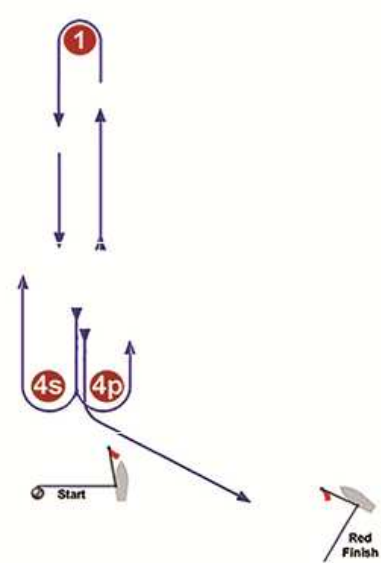
### LG



Course: Windward / Leeward

Signal	Mark Rounding Order
LG2	Start - 1 - 4s/4p - 1 - 4s - Finish
LG3	Start - 1 - 4s/4p - 1 - 4s/4p - 1 - 4s - Finish
LG4	Start - 1 - 4s/4p - 1 - 4s/4p - 1 - 4s/4p - 1 - 4s - Finish

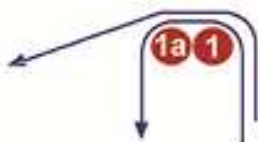
### LR



Course: Windward / Leeward

Signal	Mark Rounding Order
LR2	Start - 1 - 4s/4p - 1 - 4p - Finish
LR3	Start - 1 - 4s/4p - 1 - 4s/4p - 1 - 4p - Finish
LR4	Start - 1 - 4s/4p - 1 - 4s/4p - 1 - 4s/4p - 1 - 4p - Finish

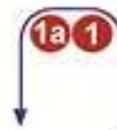
## IA



Course: Same As Course I Except with Offset Mark 1A

Signal	Mark Rounding Order
IA2	Start - 1 - 1a - 4s/4p - 1 - 1a - 2 - 3p - Finish
IA3	Start - 1 - 1a - 4s/4p - 1 - 1a - 4s/4p - 1 - 1a - 2 - 3p - Finish
IA4	Start - 1 - 1a - 4s/4p - 1 - 1a - 4s/4p - 1 - 1a - 4s/4p - 1 - 1a - 2 - 3p - Finish

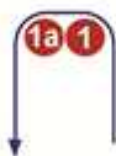
## LGA



Course: Same as LG Except With Offset Mark 1a

Signal	Mark Rounding Order
LGA2	Start - 1 - 1a - 4s/4p - 1 - 1a - 4s - Finish
LGA3	Start - 1 - 1a - 4s/4p - 1 - 1a - 4s/4p - 1 - 1a - 4s - Finish
LGA4	Start - 1 - 1a - 4s/4p - 1 - 1a - 4s/4p - 1 - 1a - 4s/4p - 1 - 1a - 4s - Finish

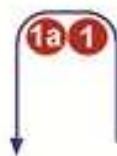
## LA



Course: Same As Course L Except with Offset Mark 1A

Signal	Mark Rounding Order
LA2	Start - 1 - 1a - 4s/4p - 1 - 1a - Finish
LA3	Start - 1 - 1a - 4s/4p - 1 - 1a - 4s/4p - 1 - 1a - Finish
LA4	Start - 1 - 1a - 4s/4p - 1 - 1a - 4s/4p - 1 - 1a - 4s/4p - 1 - 1a - Finish

## LRA



Course: Same as LR Except With Offset Mark 1a

Signal	Mark Rounding Order
LRA2	Start - 1 - 1a - 4s/4p - 1 - 1a - 4p - Finish
LRA3	Start - 1 - 1a - 4s/4p - 1 - 1a - 4s/4p - 1 - 1a - 4p - Finish
LRA4	Start - 1 - 1a - 4s/4p - 1 - 1a - 4s/4p - 1 - 1a - 4s/4p - 1 - 1a - 4p - Finish

## ADDENDUM Q

### UMPIRED FLEET RACING

This addendum has been approved by ISAF in accordance with rule 86.2 and ISAF Regulation 28.1.3.

**Version:** December 14, 2014

These sailing instructions change the definition Proper Course, and rules 20, 28.2, 44, 60, 61, 62, 63, 64.1, 65, 66, 70, 78.3 and B5.

### Q1 CHANGES TO RACING RULES

*Additional changes to rules are made in instructions Q2, Q3, Q4, and Q5.*

#### Q1.1 Changes to the Definitions and the Rules of Part 2 and Part 4

- (a) Add to the definition Proper Course: 'A boat taking a penalty or manoeuvring to take a penalty is not sailing a *proper course*.'
- (b) When rule 20 applies, the following arm signals are required in addition to the hails:
  - (1) for 'Room to tack', repeatedly and clearly pointing to windward; and
  - (2) for 'You tack', repeatedly and clearly pointing at the other boat and waving the arm to windward.

Instruction Q1.1(b) does not apply to boards.

#### Q1.2 Changes to Rules Involving Protests, Requests for Redress, Penalties and Exoneration

- (a) The first sentence of rule 44.1 is replaced with: 'A boat may take a One-Turn Penalty when she may have broken a rule of Part 2 (except rule 14 when she has caused damage or injury) or rule 31 or 42 while *racing*.'
- (b) For boards, the One-Turn Penalty is one 360<sup>0</sup> turn with no requirement for a tack or a gybe.
- (c) Rule 60.1 is replaced with 'A boat may protest another boat or request redress provided she complies with instructions Q2.1 and Q2.4.'
- (d) The third sentence of rule 61.1(a) and all of rule 61.1(a)(2) are deleted. Rule B5 is deleted.
- (e) Rules 62.1(a), (b) and (d) are deleted. In a race where this addendum applies, there shall be no scoring adjustments for redress given under any of these rules for a previous race.
- (f) Rule 64.1(a) is changed so that the provision for exonerating a boat may be applied by the umpires without a hearing, and it takes precedence over any conflicting instruction of this addendum.
- (g) Rules P1 to P4 shall not apply.

### Q2 PROTESTS AND REQUESTS FOR REDRESS BY BOATS

**Q2.1** While racing, a boat may protest another boat under a rule of Part 2 (except rule 14) or under rule 31 or 42; however, a boat may only protest under a rule of Part 2 for an incident in which she was involved. To do so she shall hail 'Protest' and conspicuously display a red flag at the first reasonable opportunity for each. She shall remove the flag before, or at the first reasonable opportunity after a boat involved in the incident has taken a penalty voluntarily or after an umpire's decision. However, a board need not display a red flag.

**Q2.2** A boat that protests as provided in instruction Q2.1 is not entitled to a hearing. Instead, a boat involved in the incident may acknowledge breaking a rule by taking a One-Turn Penalty as described in rule 44.2. If the protested boat does not take a penalty voluntarily, an umpire will decide whether to penalize any boat and signal the decision as provided in instruction Q3.1.



**Q2.3** At the finishing line, the race committee will inform the competitors about each boat's finishing place or scoring abbreviation. After this has been done for all boats, the race committee will promptly display flag B with one sound. Two minutes later flag B will be removed with one sound.

**Q2.4** A boat intending to

- (a) protest another boat under a rule other than instruction Q3.2 or Q4.2(a), or a rule listed in instruction Q2.1,
- (b) protest another boat under rule 14 if there was contact that caused damage or injury, or
- (c) request redress shall hail the race committee before or during the display of flag B. The same time limit applies to protests under instructions Q5.4 and Q5.5. The protest committee may extend the time limit if there is good reason to do so.

**Q2.5** The race committee will promptly inform the protest committee about any protests or requests for redress made under instruction Q2.4.

### **Q3 UMPIRE SIGNALS AND IMPOSED PENALTIES**

**Q3.1** An umpire will signal a decision as follows:

- (a) A green and white flag with one long sound means 'No penalty.'
- (b) A red flag with one long sound means 'A penalty is imposed or remains outstanding.' The umpire will hail or signal to identify each such boat.
- (c) A black flag with one long sound means 'A boat is disqualified.' The umpire will hail or signal to identify the boat disqualified.

**Q3.2** (a) A boat penalized under instruction Q3.1(b) shall take a One-Turn Penalty as described in rule 44.2.

- (b) A boat disqualified under instruction Q3.1(c) shall promptly leave the course area.

### **Q4 PENALTIES AND PROTESTS INITIATED BY AN UMPIRE; ROUNDING OR PASSING MARKS**

**Q4.1** When a boat

- (a) breaks rule 31 and does not take a penalty,
- (b) breaks rule 42,
- (c) gains an advantage despite taking a penalty,
- (d) deliberately breaks a rule,
- (e) commits a breach of sportsmanship, or
- (f) fails to comply with instruction Q3.2 or to take a penalty when required to do so by an umpire, an umpire may penalize her without a protest by another boat. The umpire may impose one or more One-Turn Penalties to be taken as described in rule 44.2, each signalled in accordance with instruction Q3.1(b), or disqualify her under instruction Q3.1(c), or report the incident to the protest committee for further action. If a boat is penalized under instruction Q4.1(f) for not taking a penalty or taking a penalty incorrectly, the original penalty is cancelled.

**Q4.2** (a) A boat shall not round or pass a mark on the wrong side. If she does so, she may correct her error as provided in rule 28.2 only if she does so before she rounds or passes the next mark or finishes.

- (b) When a boat breaks instruction Q4.2(a) and fails to correct her error before rounding or passing the next mark or finishing, an umpire may disqualify her under instruction Q3.1(c).

**Q4.3** An umpire who decides, based on his own observation or a report received from any source, that a boat may have broken a rule, other than instruction Q3.2 or Q4.2(a) or a rule listed in instruction Q2.1, may inform the protest committee for its action under rule 60.3. However, he will not inform the protest committee of an alleged breach of rule 14 unless there is damage or injury.

**Q5 PROTESTS; REQUESTS FOR REDRESS OR REOPENING; APPEALS; OTHER PROCEEDINGS**

- Q5.1** No proceedings of any kind may be taken in relation to any action or non-action by an umpire.
- Q5.2** A boat may not base an appeal on an alleged improper action, omission or decision of the umpires or the protest committee. In rule 66 the third sentence is changed to 'A party to the hearing may not ask for a reopening.'
- Q5.3** (a) Protests and requests for redress need not be in writing.  
(b) The protest committee may take evidence and conduct the hearing in any way it considers appropriate and may communicate its decision orally.  
(c) If the protest committee decides that a breach of a rule has had no effect on the outcome of the race, it may impose a penalty of points or fraction of points or make another arrangement it decides is equitable, which may be to impose no penalty.
- Q5.4** The race committee will not protest a boat, except following a report under rule 43.1(c) or 78.3.
- Q5.5** The protest committee may protest a boat under rule 60.3. However, it will not protest a boat for breaking instruction Q3.2 or Q4.2(a), a rule listed in instruction Q2.1, or rule 14 unless there is damage or injury.